

kystvej 8 + 10

juelsminde

idéoplæg januar 2017





kystvej

arealopgørelse:

grundareal: matrikel 25IO (1.701 m²) + matrikel 49C (1.005 m²) = **2.706 m²**

bygningsareal: **1.085 m²**

bebyggelsesprocent samlet: **40 %**



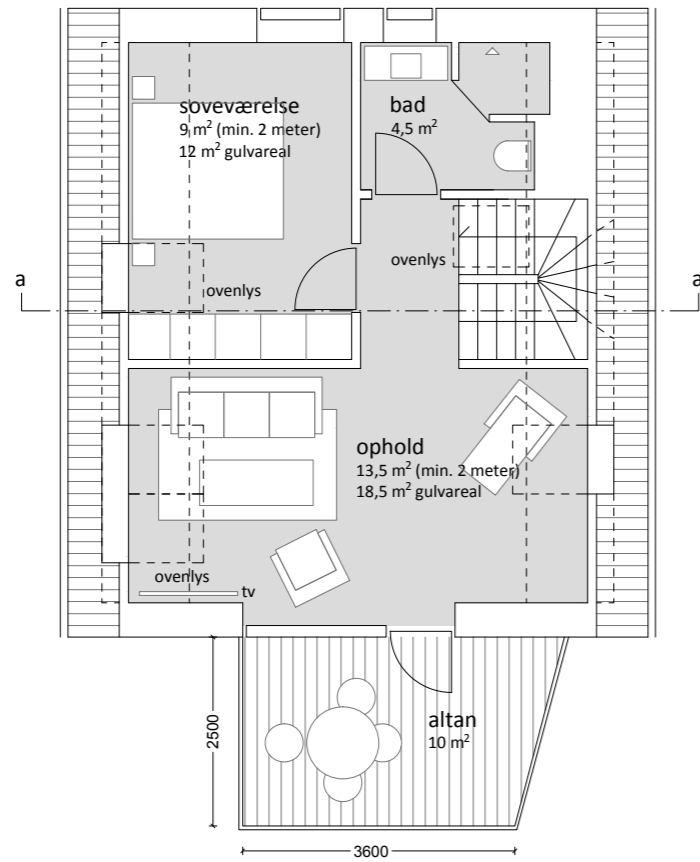
kystvej 8 + 10 // juelsminde

helhedsplan | 1:250 | dato: 10.01.2017 | sag: 16055



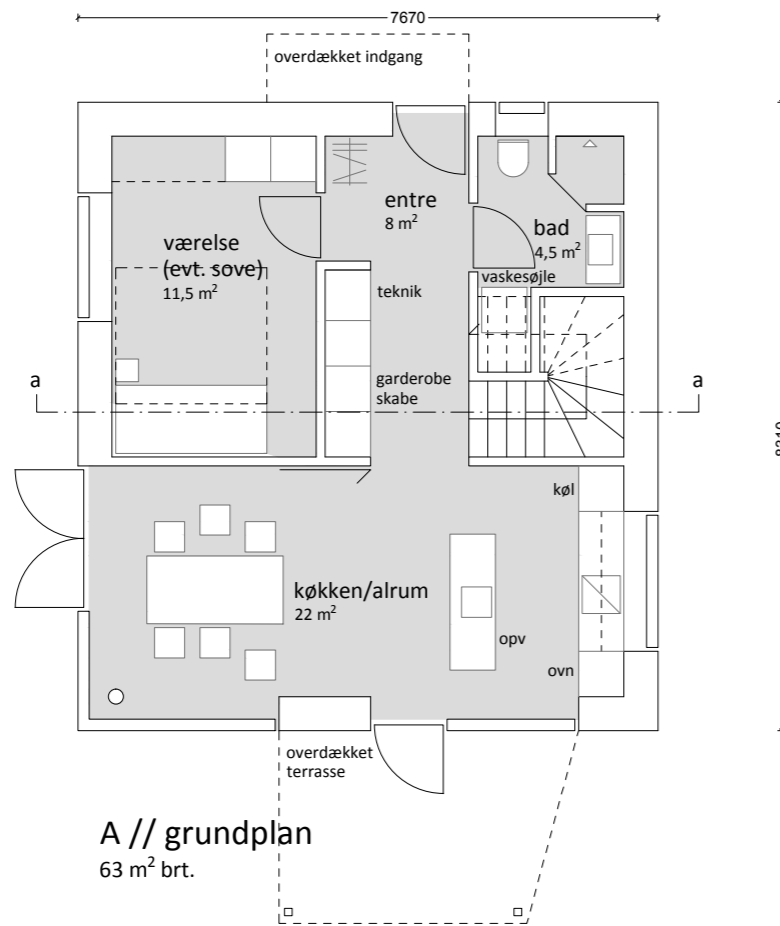
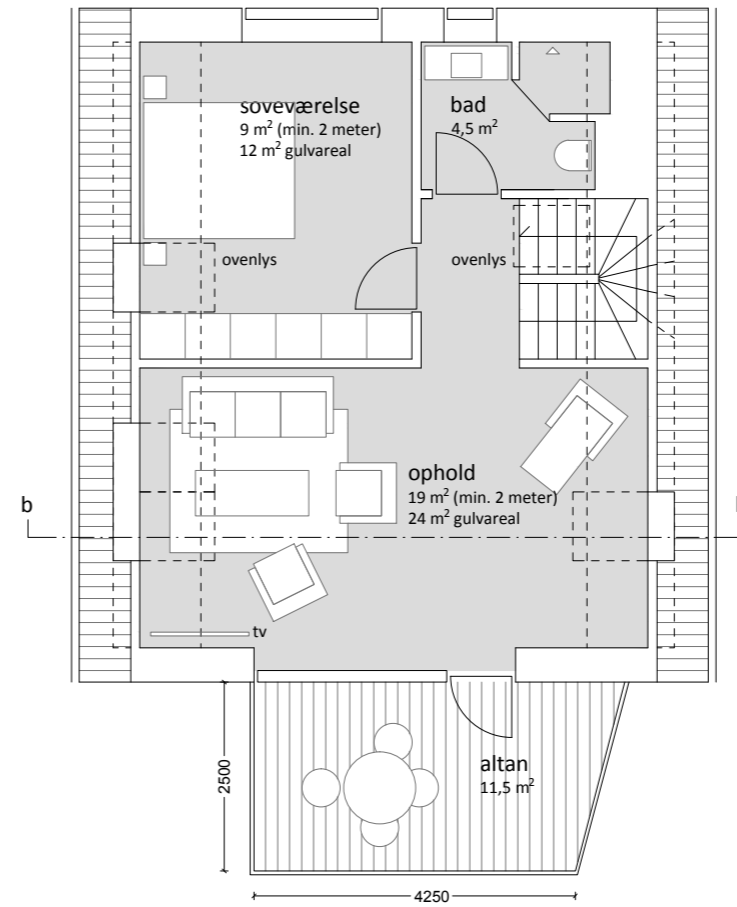
A // tagetage

58 m² brt.



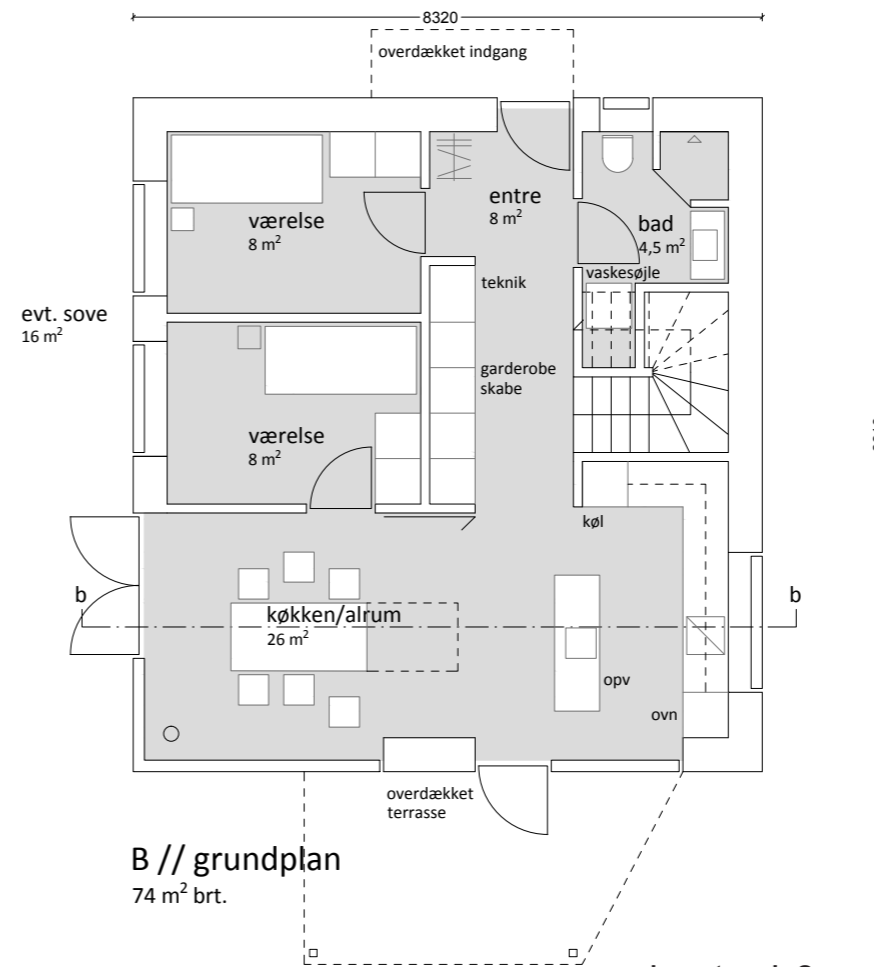
B // tagetage

67 m² brt.



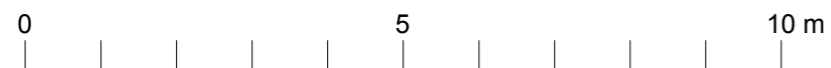
A // grundplan

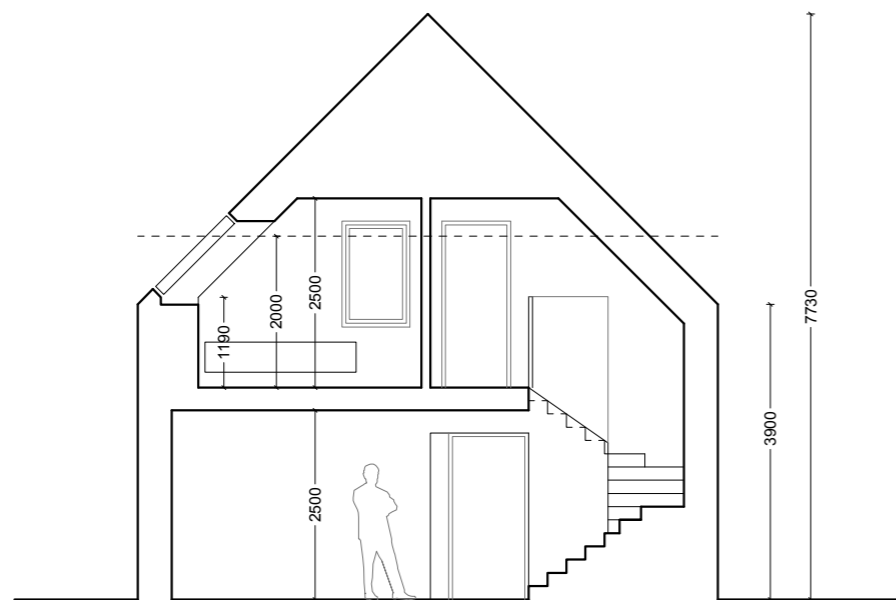
63 m² brt.



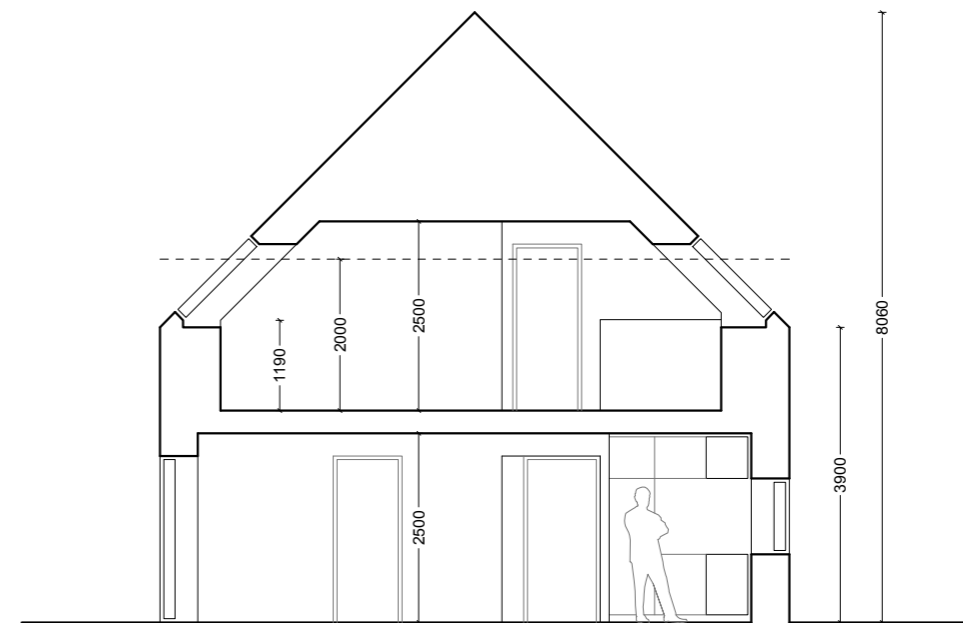
B // grundplan

74 m² brt.



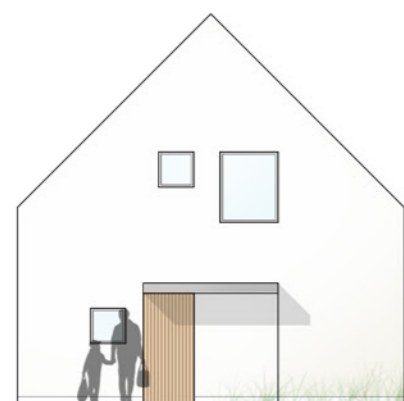


A // principsnit aa



B // principsnit bb





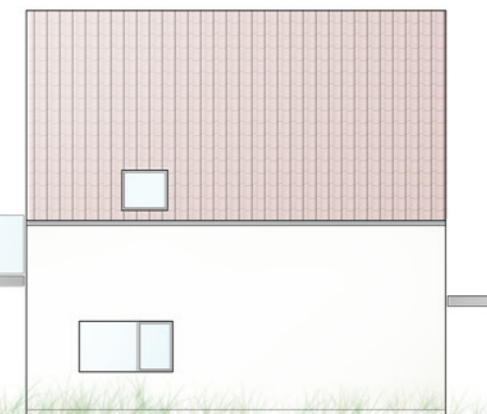
facade nord // ankomst



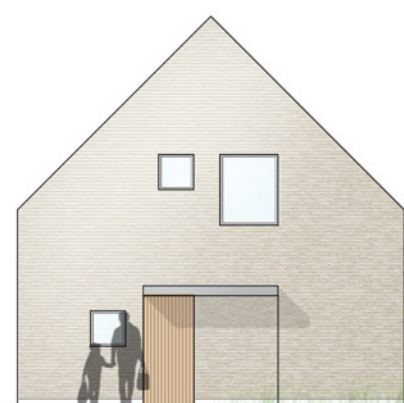
facade vest



facade syd



facade øst



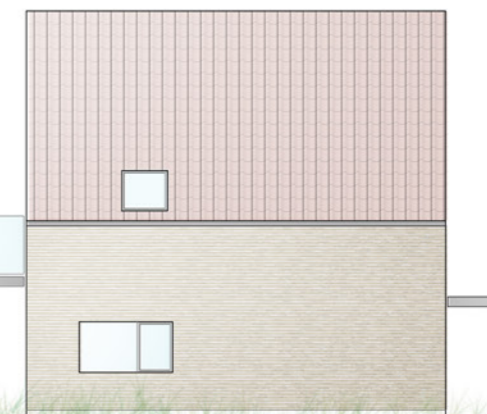
facade nord // ankomst



facade vest

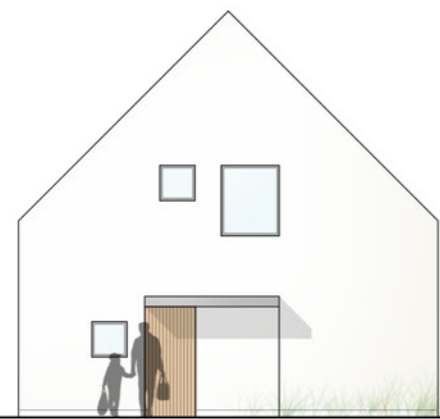


facade syd

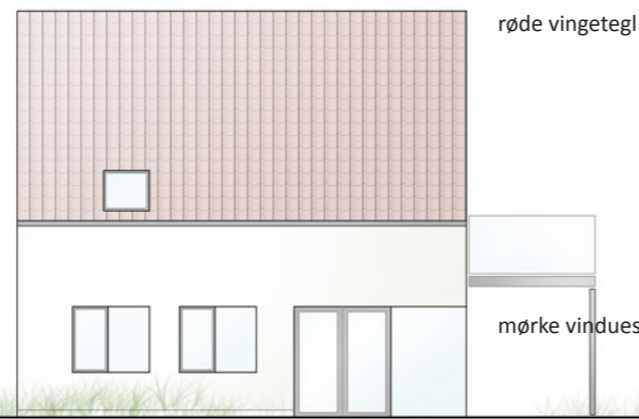


facade øst

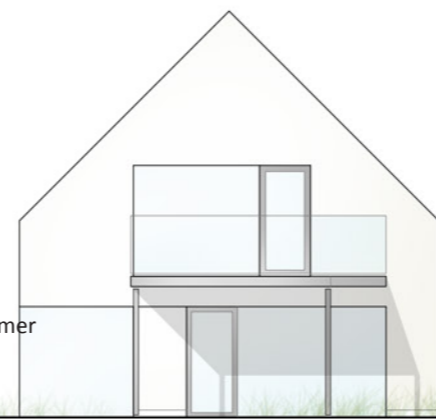




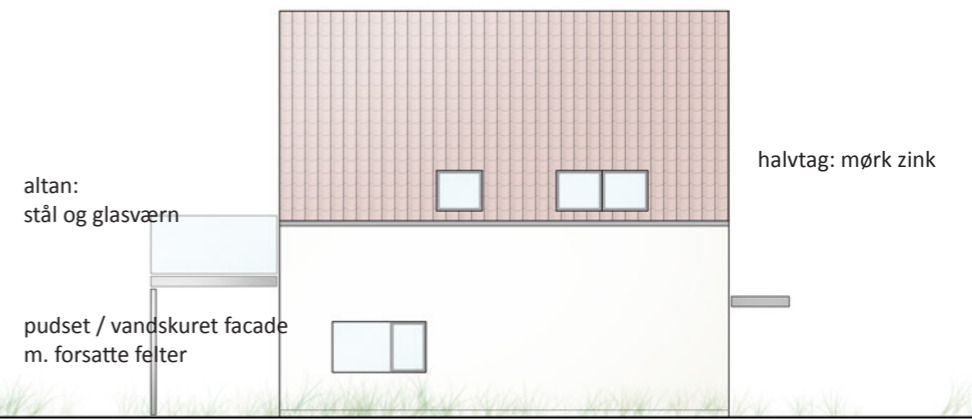
facade nord // ankomst



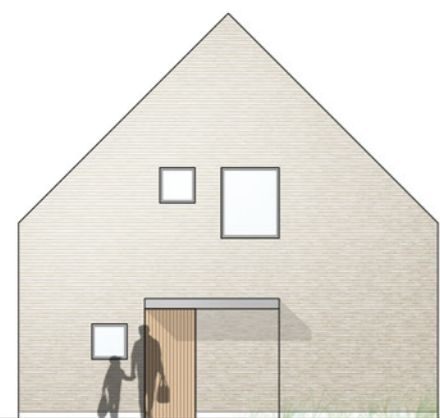
facade vest



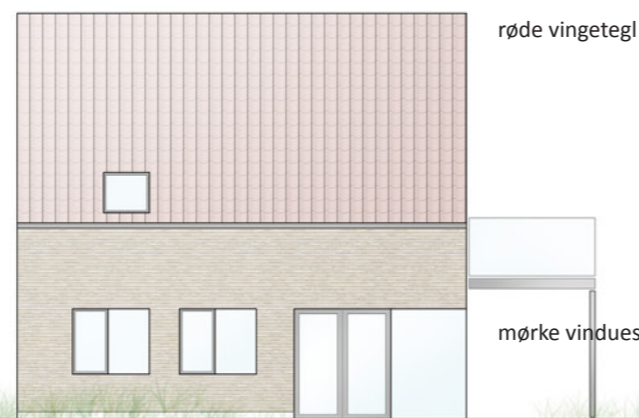
facade syd



facade øst



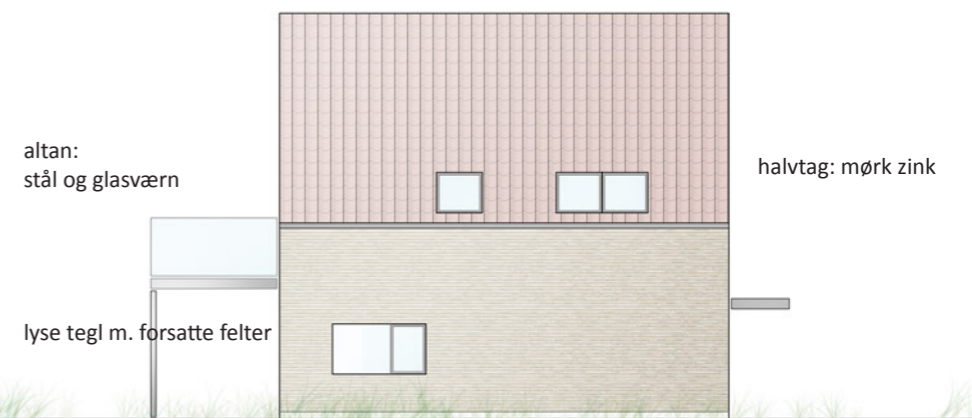
facade nord // ankomst



facade vest



facade syd



facade øst

